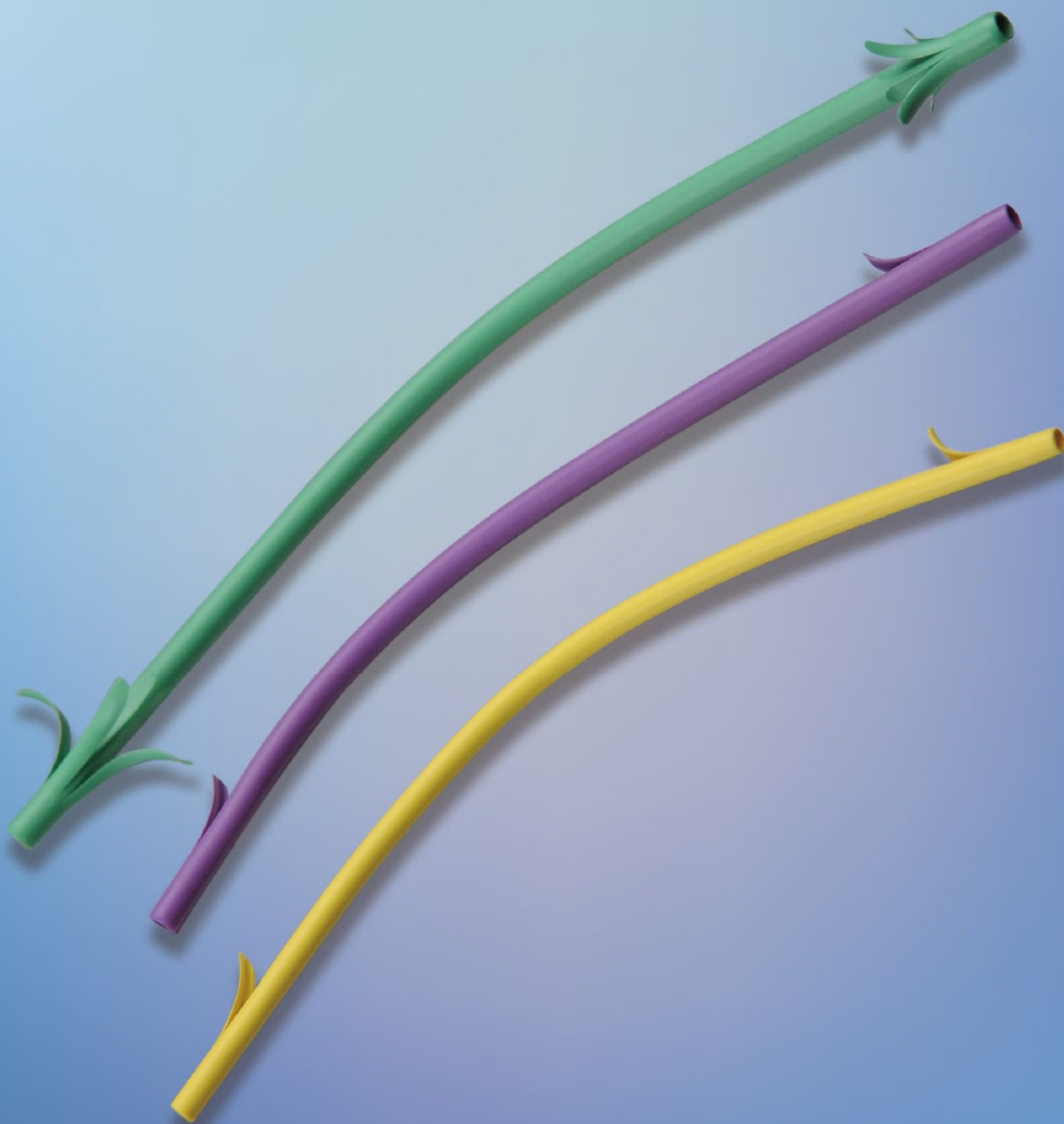


*LeTube*<sup>TM</sup>

Single-use Biliary Draining Tubing



**Leo+Med**  
乐奥医疗 为生命健康服务

Endoscopic Accessories ERCP Series 

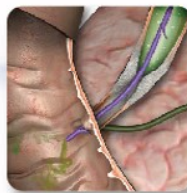
# LeTube™ Single-use Biliary Draining Tubing

Used for endoscopic retrograde biliary drainage(ERBD).



## ● Good Radiopacity

- Whole drainage tube has clear contrast image under X-ray during the procedure.
- Multiple markers of delivery system provide enough radiopacity to facilitate position confirmation.



## ● Precision placement

- Perfect balance of drainage tube flexibility and stiffness improves good deliverability.
- The flaps are designed to increase reliability and reduce migration.
- Preloaded type is designed to provide endoscopic adjustable and precise placement.

## ● Excellent surface status

- Fluoroplastic material provides lower inner surface friction coefficient compared to conventional plastic materials.
- Excellent surface provides less possibility of bile duct obstruction.

## Specification:

### ▲ Single Wing

| Tubing Single REF | Pre-loaded REF   | Tubing Length (mm) | Tubing Diam. (Fr) | Tubing Configuration | Compatible Guidewire | Minimum Working Channel (mm) |
|-------------------|------------------|--------------------|-------------------|----------------------|----------------------|------------------------------|
| WL-7-700          | WL-7-700-P7      | 70                 | 7.0               | Straight             | 0.035"               | 2.8                          |
| WD-7-900          | WD-7-900-P7      | 90                 |                   | Proximal bend        | 0.035"               | 2.8                          |
| WC-7-1200         | WC-7-1200-P7     | 120                |                   | Center bend          | 0.035"               | 2.8                          |
| WL-8.5-700        | WL-8.5-700-P8.5  | 70                 | 8.5               | Straight             | 0.035"               | 3.2                          |
| WD-8.5-900        | WD-8.5-900-P8.5  | 90                 |                   | Proximal bend        | 0.035"               | 3.2                          |
| WC-8.5-1200       | WC-8.5-1200-P8.5 | 120                |                   | Center bend          | 0.035"               | 3.2                          |
| WL-10-700         | WL-10-700-P10    | 70                 | 10                | Straight             | 0.035"               | 3.8                          |
| WD-10-900         | WD-10-900-P10    | 90                 |                   | Proximal bend        | 0.035"               | 3.8                          |
| WC-10-1200        | WC-10-1200-P10   | 120                |                   | Center bend          | 0.035"               | 3.8                          |

▲ Not all part numbers shown on this product information sheet. Please consult with LEOMED representative for details.

### ▲ Christmas tree

| Tubing Single REF | Pre-loaded REF   | Tubing Length (mm) | Tubing Diam. (Fr) | Tubing Configuration | Compatible Guidewire | Minimum Working Channel (mm) |
|-------------------|------------------|--------------------|-------------------|----------------------|----------------------|------------------------------|
| CL-8.5-700        | CL-8.5-700-P8.5  | 70                 | 8.5               | Straight             | 0.035"               | 3.2                          |
| CD-8.5-900        | CD-8.5-900-P8.5  | 90                 |                   | Proximal bend        | 0.035"               | 3.2                          |
| CC-8.5-1200       | CC-8.5-1200-P8.5 | 120                |                   | Center bend          | 0.035"               | 3.2                          |
| CL-10-700         | CL-10-700-P10    | 70                 | 10                | Straight             | 0.035"               | 3.8                          |
| CD-10-900         | CD-10-900-P10    | 90                 |                   | Proximal bend        | 0.035"               | 3.8                          |
| CC-10-1200        | CC-10-1200-P10   | 120                |                   | Center bend          | 0.035"               | 3.8                          |

▲ Not all part numbers shown on this product information sheet. Please consult with LEOMED representative for details.